



www.parchem.com



parchem
fine & specialty chemicals





GET A QUICK QUOTE

415 Huguenot Street, New Rochelle, NY 10801

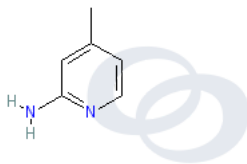
Disclaimer: this is a web generated product specification and property document. All information on this document is subject to change without notice.

Typical Product Specifications & Properties

4-Methylpyridin-2-amine

CAS Number : 695-34-1

Specifications	Limits
Molecular weight	108.14
Melting Point	96-99 C
Appearance	Light brown crystalline powder



Chemical Structure

parchem
fine & specialty chemicals