



www.parchem.com



parchem
fine & specialty chemicals





GET A QUICK QUOTE

415 Huguenot Street, New Rochelle, NY 10801

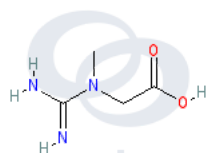
Disclaimer: this is a web generated product specification and property document. All information on this document is subject to change without notice.

Typical Product Specifications & Properties

Creatine Monohydrate

CAS Number: : 6020-87-7

Specifications	Limits
Appearance	White crystalline powder
Arsenic	1ppm max
Total Plate Count	5000 CFU/g max
Loss on Drying	12.0% max
Assay	99.0% - 101.0%
Residue on Ignition	0.1% max
Mesh	80 mesh
E.Coli	Negative
Salmonella	Negative
Heavy Metals	10ppm max



Chemical Structure

parchem
fine & specialty chemicals